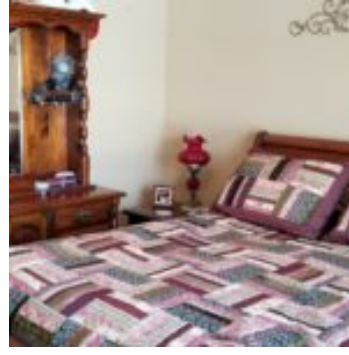
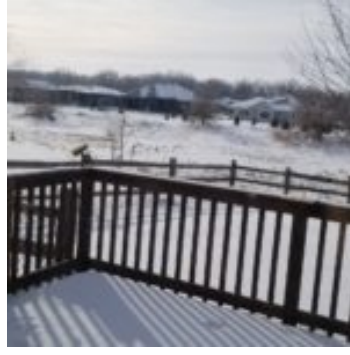


650 Prairie Boulevard



Details

Address : North Sioux City, South Dakota

State : SD

Type : Ranch Style

Square Footage : 1538

Garage Stalls : 2

Bedrooms : 3

Bathrooms : 2

Description

Respected and well built Timberlake ranch, a must see... one owner, 3 bedroom, 2 bath ranch w/ main floor laundry and tons of upgrades. NO water in 2011. Granite counter tops, maple cabinets w/ crown, new gorgeous water-proof solid surface floors, custom Hunter/Douglas up/down blinds, 2017 impact resistant shingles w/ lifetime transferable warranty, 2017 gutters, slider to private deck and fenced yard backing up to greenway. Vaulted great room, dining, kitchen back drop zone and laundry have all new flooring, that lends to versatile use of space, easy clean-up and comfortable cozy lounging in front of the gas fireplace on these cold, blustery days. Large master with L-shaped walk-in closet and private bath. 2 more bedrooms with window seats and full bath on the main. Lower Level has 3 daylight windows and one egress, with some partial finish for office or playroom. Loads of potential in the lower level and so well maintained. 572 sq ft oversized 2 stall garage, fenced back yard, concrete curbing around beautifully landscaped rock beds and sprinkled yard. Property is currently pending.

Location

Real Estate Agent Information



Pam Kavanaugh Edwards

Email: pam@dakotadunes.com

Office: 605-232-5981

Cell: 712-259-4074